

Diverse and robust molecular algorithms using reprogrammable DNA self-assembly

– Supplementary Information C: AFM images –

Damien Woods^{†,*1,2,3}, David Doty^{†,*1,4}, Cameron Myhrvold^{5,6},
Joy Hui^{1,7}, Felix Zhou^{1,8}, Peng Yin^{5,6}, Erik Winfree^{*1}

[†]Joint first co-authors, ^{*}Corresponding authors, ¹California Institute of Technology, Pasadena, CA 91125, USA. ²Inria, Paris, France. ³Current affiliation: Maynooth University, Maynooth Co. Kildare, Ireland. ⁴University of California, Davis, CA 95616, USA. ⁵Wyss Institute for Biologically Inspired Engineering, Harvard University, Boston, MA 02115, USA. ⁶Department of Systems Biology, Harvard Medical School, Boston, MA 02115, USA. ⁷Harvard University, Cambridge, MA 02318, USA. ⁸University of Oxford, Oxford, OX1 2JD, UK.

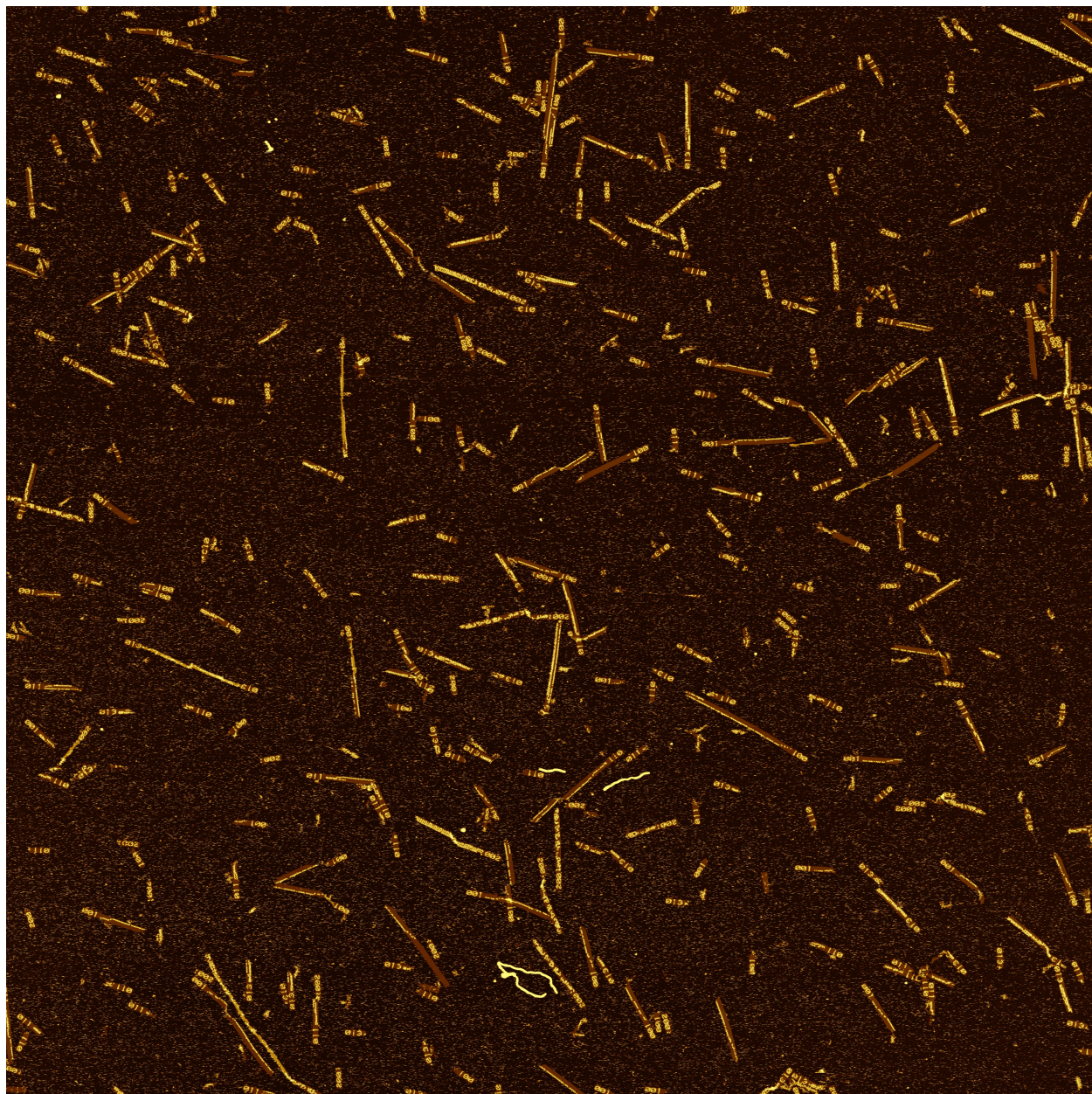
Contents

S14 Sample wide-field AFM image 1	2
S15 Sample wide-field AFM image 2	3
S16 Sample wide-field AFM image 3	4
S17 Sample wide-field AFM image 4	5

Note: This file contains four sample AFM images. The images here are JPEG compressed, which results in some smoothing. The full set of high-resolution wide-field AFM images that were analysed for the 21 circuits using the complete 6-bit IBC tile set are available at the authors' web site.

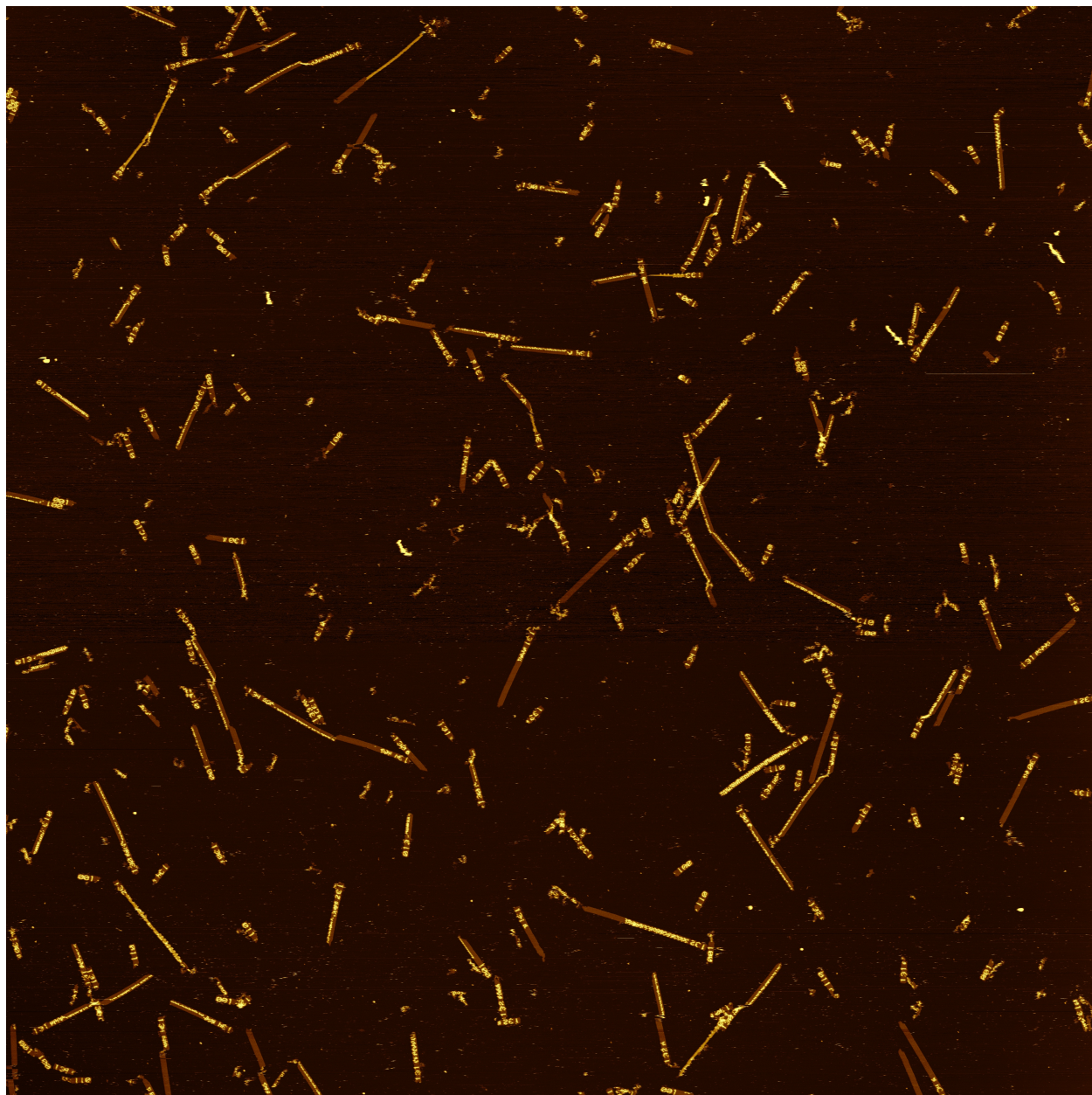
S14 Sample wide-field AFM image 1

Seed barcodes 001 (LAZYSORTING, input 000001), 011 (LAZYSORTING, input 000101), 013 (LAZYSORTING, input 000111), and 200 (CYCLE63, input 111101).



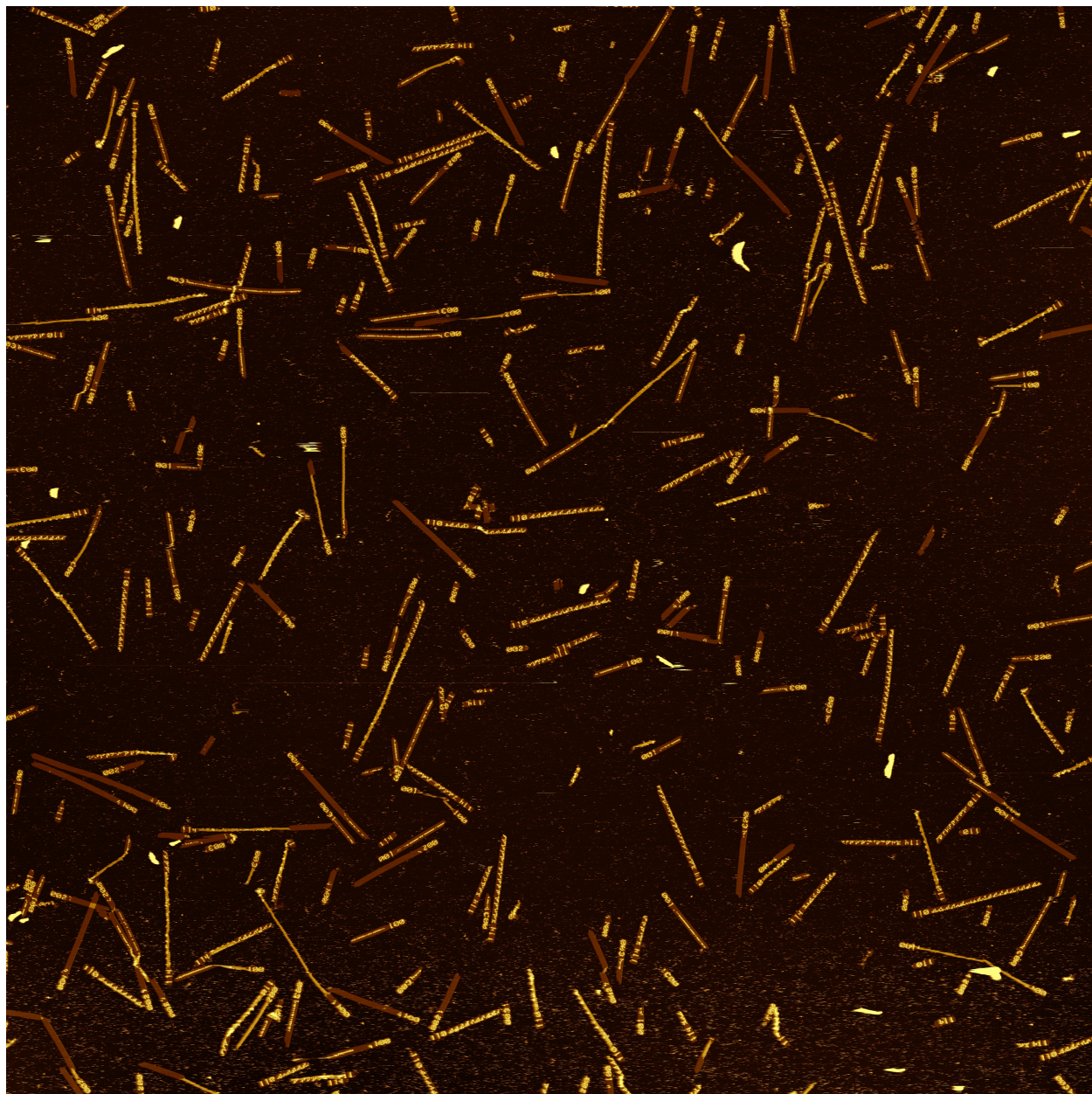
S15 Sample wide-field AFM image 2

Seed barcodes 001 (SORTING, input 000001), 011 (SORTING, input 000101), 013 (SORTING, input 000111), 130 (FAIRCOIN, input 010100, $p = 0.5$), 131 (FAIRCOIN, input 010100, $p = 0.9$), 132 (FAIRCOIN, input 010100, $p = 0.1$), 133 (FAIRCOIN, input 010100, $p = 0.7$), and 134 (FAIRCOIN, input 010100, $p = 0.3$).



S16 Sample wide-field AFM image 3

Seed barcodes 001 (PARITY, input 000001), 002 (PARITY, input 100001), 003 (PARITY, input 100101), 004 (PARITY, input 110101), 110 (RULE110, input 000001), and 114 (RULE110, input 110001).



S17 Sample wide-field AFM image 4

Seed barcodes 020 (COPY, input 001000), 200 (CYCLE63, input 111101), 210 (PALINDROME, input 001100), 211 (PALINDROME, input 110011), 212 (PALINDROME, input 111011), 213 (PALINDROME, input 110101), 230 (MULTIPLEOF3, input 000011), 231 (MULTIPLEOF3, input 010101), 232 (MULTIPLEOF3, input 010000), and 233 (MULTIPLEOF3, input 110101).

